

# Hand-held multi-purpose scabblers and grinder HSF 150

For the treatment of both floors and sub-flooring. Now also available with PCD-cup grinder DFT-175 and DFT-175-S for almost all adhesives, fillers, fibrous web backing, coatings etc.

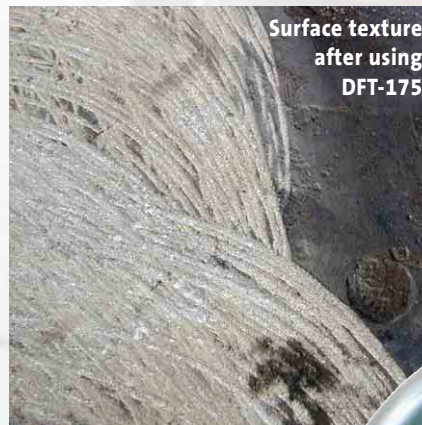
The low-vibration **HSF 150** is a must for any renovation work and sub-flooring preparation. It is indispensable when working on small or inaccessible areas and for edge and corner work. The new support ring for adjusting the cutting depth must be employed when using the PCD cutting tools. It functions also as a dust protection ring. When used together with other tools the abrasion-resistant Vulkollan ring seals the dust extraction hood. When used in conjunction with an industrial dust extractor operation of the **HSF 150** is almost dust-free.



**HSF 150** with cutters solid tungsten carbide WCT and vulcollan sealing ring.



Abrading edges and small surfaces



Surface texture after using DFT-175

## Possible areas of application:

- Sanding and keying smooth surfaces
- Cleaning or rather removal of coarse dirt from screed, concrete or other sub-flooring
- Removal of stubborn surfaces or residue such as adhesives (bitumen, PU, synthetic resins etc.), filler or fibrous web backing, felt paper, PVC surfaces, road markings, paint, coatings, felt residue etc.
- Keying or removing filler or screed
- Final finishes, smoothing joints

ALMOST  
DUST  
FREE



# Tools and accessories for the HSF 150



**Diamond cup grinder DFT-175-S** comprising grinding head and diamond ring DFR-175-S (red) with 6 PCD peaked segments for use on level mineral sub-flooring. For the removal of fibrous web backing, coatings, road markings, thin PVC surfaces, etc. PCD segments have an extremely long tool life.



**Diamond cup grinder DFT-175** comprising grinding head and diamond ring DFR-175 (black) with 6 PCD segments for use on mineral sub-flooring. For the removal of stubborn adhesives (PU, bitumen, synthetic resin, dispersion, tile and powder adhesives), felt paper, layers of filler. PCD segments have an extremely long tool life.



**Support ring** for adjusting cutting depth - required for work with the new PCD diamond cup grinders DFT-175.



**Cutters**, solid tungsten carbide WCT for paints, adhesives and road markings (surface finish is smooth)



**Tungsten carbide tipped claw cutters KR 8** for cleaning cement, screed, plaster and sub-flooring (surface finish is coarse)



**Diamond cup** for levelling screed and concrete floors, roughening tiles, etc.



**Drive plate Varia** for sand paper or grinding discs with carbide grit: for grinding and keying soft surfaces



**Systainer**

This easy to use, extremely robust **hand-held multi-purpose scabber and grinder HSF 150** is extremely versatile.

- Dust-free operation in conjunction with an industrial dust extractor
- Effective and versatile thanks to different tool heads
- Operates without chemicals

## Technical data

Motor	Original Flex motor
Voltage	230 V / 50 Hz
Speed	1750 rpm
Power	1600 Watt
Weight	8.5 kg
Degree of protection	Class II appliance excess-current circuit-breaker
Ø tool	approx. 175 mm

Scope of delivery: Machine complete with tool as selected, dust extraction hood, excess-current circuit-breaker, assembly tools. All supplied in a systainer.

Subject to technical alterations. Printed in Germany.



Erwin Früh GmbH  
Machines and accessories for professional floor treatment and sub-floor preparation  
Vorstadtstrasse 61 - 67, D-73614 Schorndorf info@frueh-maschinen.de  
Fon +49 7181 929732, Fax +49 7181 929733 www.frueh-maschinen.de